

COAXIAL CONNECTORS

Press mount connectors



ISO 9001 APPROVED





Head Office - Rosny sous Bois

RESEARCH & DEVELOPMENT

The ever increasing sophistication of microwave communication systems is continually requiring components to meet a higher level of performance. **RADIALL's** research and development groups understand these needs and are committed to searching for product solutions that will be needed in the future. They also are providing continued improvements to our already extensive lines of high performance products. All our engineer teams are equipped with state of the art equipment and facilities, in an effort to provide the best solutions to our customers.

Since 1952, **RADIALL** has specialized in the field of coaxial connectors and cables assemblies. **RADIALL's** experience and high technology focus, combined with our large worldwide production capability have made the company a major supplier of RF coaxial connectors in the world and the number one in Europe.



CAD workstation



Numerical control lathe

MANUFACTURING

RADIALL knows that the quality of the connectors components is directly related to the mechanical precision of the machining process, along with good quality procedures. In an effort to continually meet the highest quality standards, all our production plants are equipped with the latest state of the art production equipment. **RADIALL's** manufacturing process maintains strict control of all procedures and incorporates all tooling, machining, surface treatment and assembly operations into the manufacturing process of each production group.



Base station of cellular network

HIGH RELIABILITY

Reliability of inter-connection systems is of the utmost importance in telecommunications applications. This industry need has led **RADIALL** to link high performance design, manufacturing and quality control. This has given the company the capability to produce connectors that will operate in the most stringent environments. The wide range of our product offering allows us to propose the best complete solution for your exact need.



Microwave test device

TOTAL QUALITY MANAGEMENT

Radiall has implemented in 1997 a worldwide Total Quality Management system based on a continuous improvement program of all processes of the company, focused on the total customer satisfaction.

Radiall Total Quality Program is managed at all levels of the company as well as around the manufacturing processes or technical and administrative processes. Moreover, **Radiall** Company actively prepare the transition of its quality system to the **ISO 9000 - Rev 2000 standard**.

QUALITY SYSTEM CERTIFICATION STATUS

Currently **ISO 9001** certified by BVQI for all its activities, **Radiall** is working to achieve **QS 9000** certification for all its automotive market (followed by **ISO/TS 16949** certification beginning of 2002).

ENVIRONMENT MANAGEMENT

Radiall is working in environmental way in all the chain of business from conception, industrialization, process and delivery.

The standard used to implement the Environmental Management System is ISO 14 001 and **Radiall** has just succeed in ISO 14001 certification.



ISO 9001 ACCREDITATION

This certificate is witness to **RADIALL**'s achievement and commitment to the Total Quality Process. **RADIALL** has always been, since its inception, a company committed to being a Total Quality supplier. Quality is our way of life at **RADIALL**.

PRESS MOUNT CONNECTORS

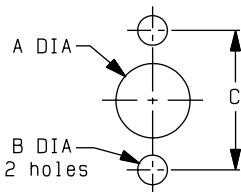
INTRODUCTION

PRESS-MOUNT technology features new generation of panel connectors, the main product advantages are:

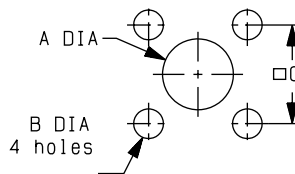
● Easy installation:

- Panel cutout: only one hole instead of three or five (for flange connector) or D hole.

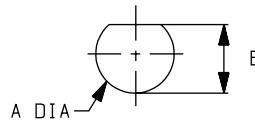
2 hole flange connector



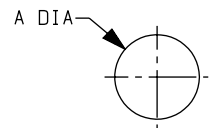
Square flange connector



Bulkhead connector



Press mount connector



- Mounting on the panel: no screws, washer or nut (fewer piece parts) are needed, connectors are simply pressed in, using manual or automatic assembly process.

● Saving mounting time:

This innovative solution combines time savings with cost reduction.

● Secure mounting:

The retention force exceeds the mating/unmating forces preventing the risk of pull out and offering a secure mounting.

This new design is applicable on our existing series: SMB, SMA, BMA, MCX, BNC, N, 1.0/2.3, Adapters... However, specific connectors can still be developed upon request.

	female			male
	solder contact (cylindrical tab)	solder pot	straight terminal	straight terminal
MCX	R113 402 000 page 5	R113 402 220 page 5		R113 405 520* page 5
SMB				R114 505 220* page 6
1.0/2.3			R120 402 200 page 6	
QMA			R123 590 027 page 7	
Commercial SMA			R124 590 303 page 7	
Standard SMA		R125 590 001 page 7	R125 590 221 page 7	
Standard BMA			R128 590 041 page 8	R128 595 000 R128 595 001 page 8
Commercial BMA				R128 595 827 R128 595 837 page 8
BNC			R141 500 200 page 9	
N			R161 540 036 page 9	

* rear mount

STRAIGHT MCX RECEPTACLES

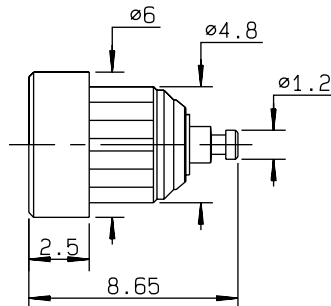


Fig. 1

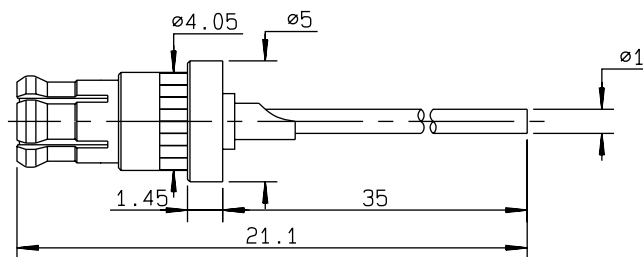


Fig. 2

part number	fig	center contact	cut out	finish	packaging	rear contact	note
R113 402 000	1	female	P02	Gold	100	solder contact (cylindrical tab)	front mount
R113 402 220 •	1	female	P02	Nickel	100	straight terminal	front mount
R113 405 520	2	male	P03	Gold	100	straight terminal	rear mount

For more information about MCX series, please ask for our catalog **D1 113 CE**.

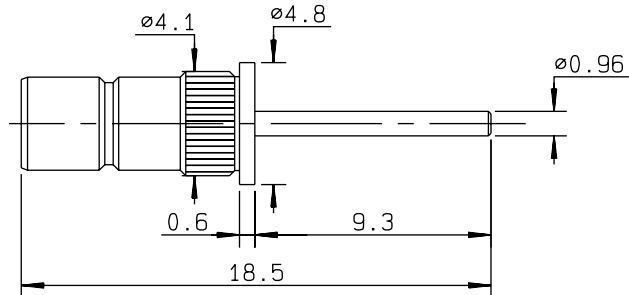
For unit packaging, add "W" after the P/N

• upon request

PRESS MOUNT CONNECTORS

SMB and 1.0/2.3 series

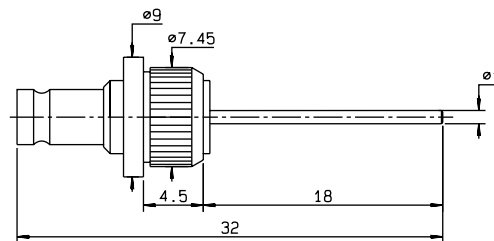
STRAIGHT SMB RECEPTACLE



part number	center contact	cut out	finish	packaging	rear contact	note
R114 505 220	male	P04	Nickel	100	straight terminal	rear mount

For more information about SMB series, please ask for our catalog **D1 114 CE**.

STRAIGHT 1.0/2.3 RECEPTACLE



part number	center contact	cut out	finish	packaging	rear contact	note
R120 402 200	female	P13	Gold	100	straight terminal	front mount

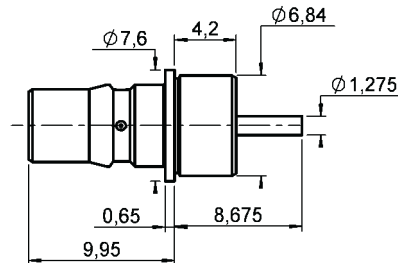
For more information about 1.0/2.3 series, please ask for our catalog **D1 129 CE**.

For unit packaging, add "W" after the P/N

PRESS MOUNT CONNECTORS

QMA and SMA series

STRAIGHT QMA RECEPTACLE



part number	center contact	cut out	finish	packaging	rear contact	note
R123 590 027	female	P11	GBR	100	straight terminal	front mount

For more information about QMA series, please ask for our catalog **D1 123 CE**.

STRAIGHT SMA RECEPTACLES

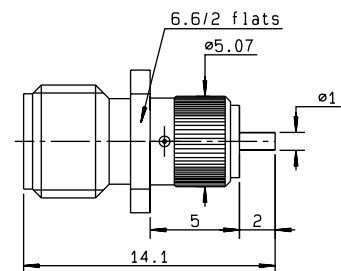
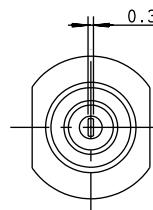


Fig. 1

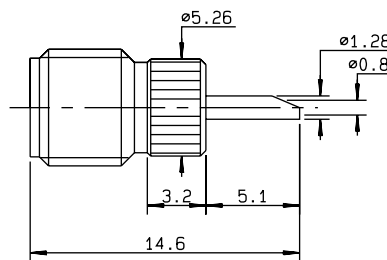


Fig. 2

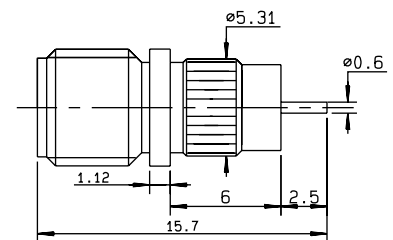


Fig. 3

R124 : Commercial SMA (brass)

R125 : Standard SMA (stainless steel)

part number	fig	center contact	cut out	finish	packaging	rear contact	note
R124 590 303 •	1	female	P05	Gold	100	straight terminal	front mount
R125 590 001	2	female	P14	Passivated	100	solder pot	front mount
R125 590 221	3	female	P09	Passivated	100	straight terminal	front mount

For more information about these series, please ask for our catalogs **D1 124 CE** (Commercial SMA series), **D1 125 CE** (SMA series).

For unit packaging, add "W" after the P/N

• upon request

STRAIGHT STANDARD BMA RECEPTACLES

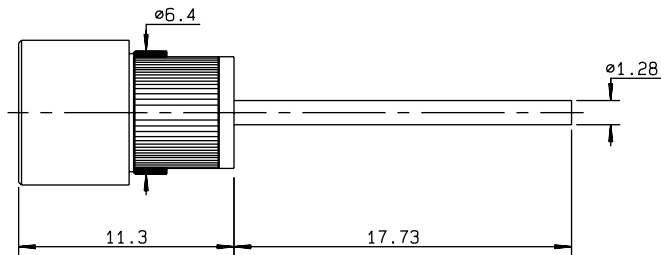


Fig. 1

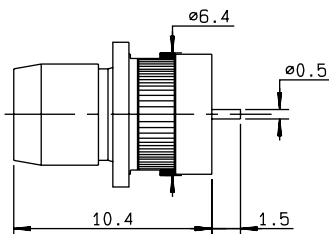


Fig. 2

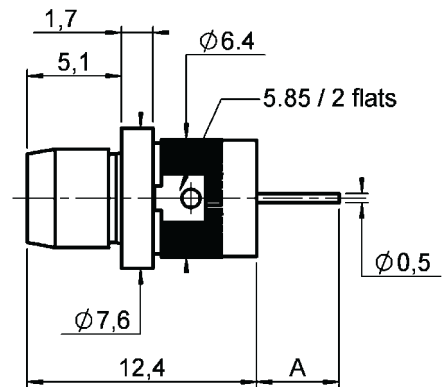


Fig. 3

part number	fig	center contact	cut out	finish	packaging	rear contact	note
R128 590 041	1	female	P12	Passivated	unit	straight terminal	front mount
R128 595 000	2	male	P07	Gold	unit	straight terminal	front mount
R128 595 001	2	male	P07	Passivated	unit	straight terminal	front mount

STRAIGHT COMMERCIAL BMA RECEPTACLES

part number	fig	center contact	cut out	finish	packaging	rear contact	note
R128 595 827	3	male	P06	BBR	100	straight terminal	front mount
R128 595 837	3	male	P06	BBR	100	straight terminal	front mount

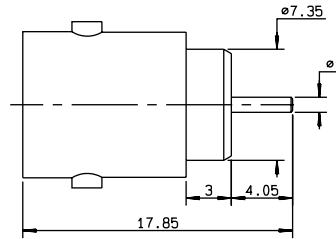
For more information about Commercial BMA series, please ask for our catalog **D1 128 DE**.

For unit packaging, add "W" after the P/N

PRESS MOUNT CONNECTORS

BNC and N series

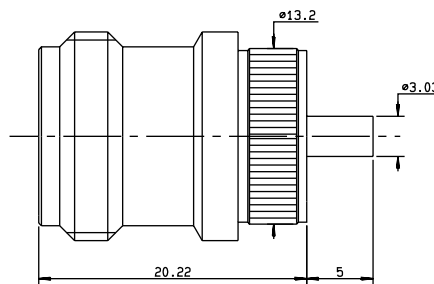
STRAIGHT BNC RECEPTACLE



part number	imp	center contact	cut out	finish	packaging	rear contact	note
R141 500 200 •	50	female	P10	Nickel	100	straight terminal	front mount

For more information about BNC series, please ask for our catalog **D1 141 CE**.

STRAIGHT N RECEPTACLE



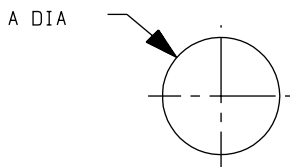
part number	center contact	cut out	finish	packaging	rear contact	note
R161 540 036	female	P08	Silver	50	straight terminal	front mount

For more information about N series, please ask for our catalog **D1 161 CE**.

For unit packaging, add "W" after the P/N

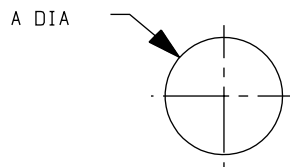
- upon request

P02



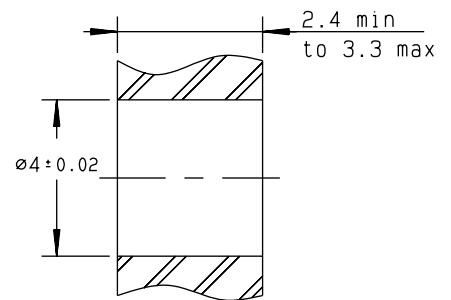
MM	
	maxi mini
A	4.77 4.74

P03

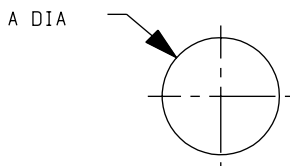


MM	
	maxi mini
A	4.075 4.05

P04

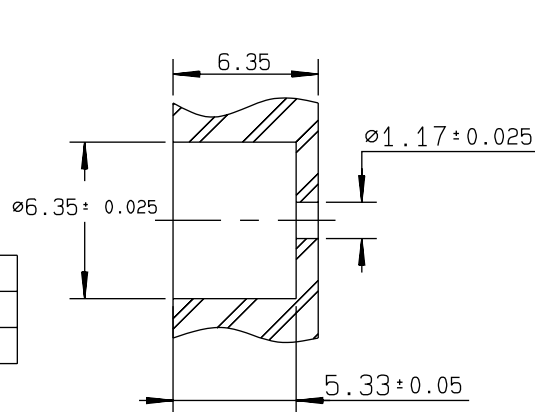


P05

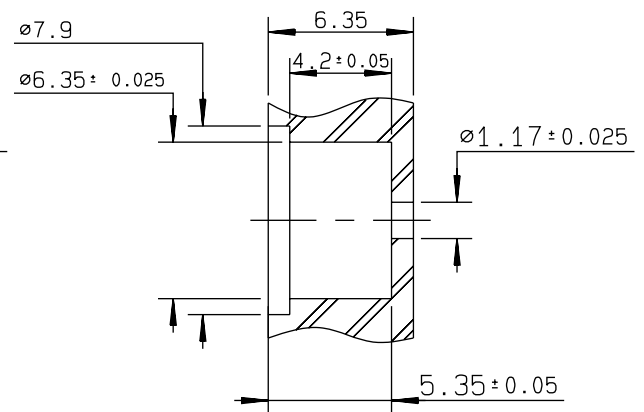


MM	
	maxi mini
A	4.99 4.93

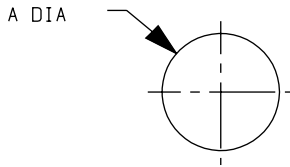
P06



P07

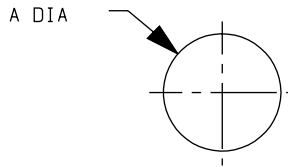


P08



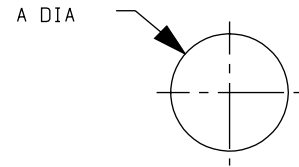
MM		
	maxi	mini
A	13.22	13.18

P09



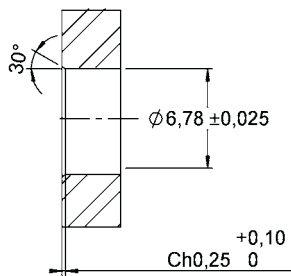
MM		
	maxi	mini
A	5.27	5.23

P10

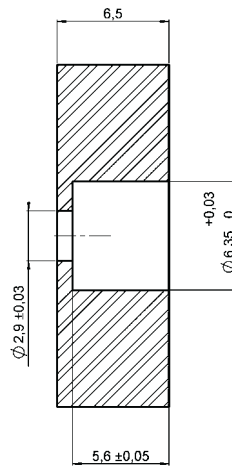


MM		
	maxi	mini
A	7.315	7.3

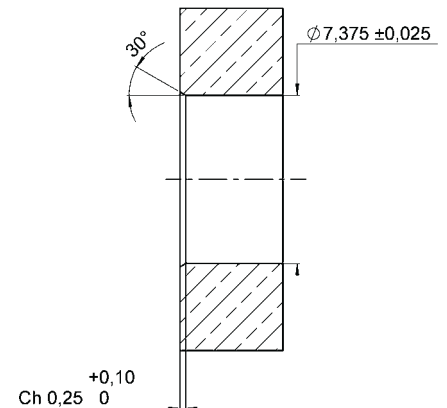
P11



P12



P13



P14

